

Fold along dotted line as well as along the edge of the basket

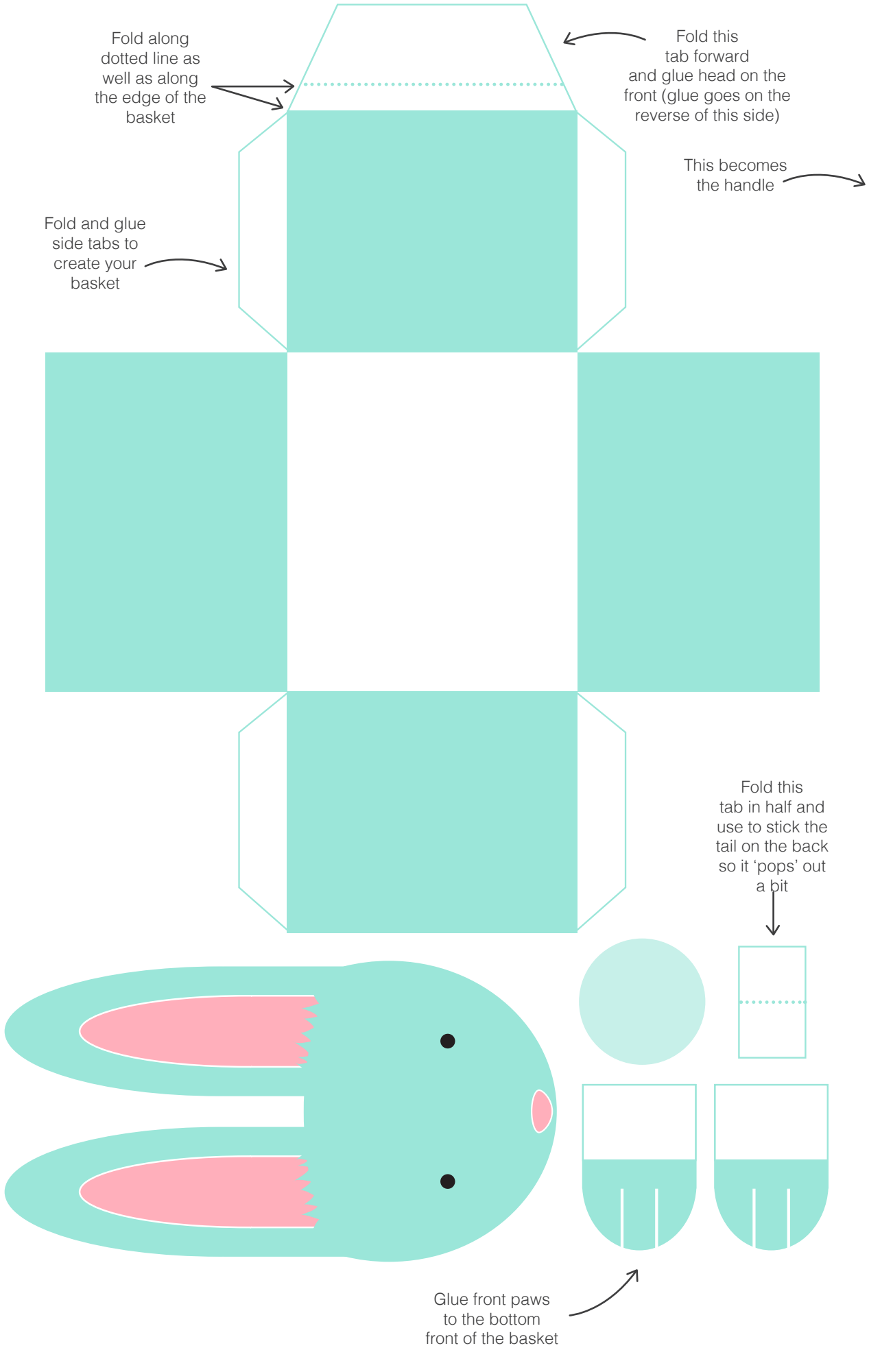
Fold this tab forward and glue head on the front (glue goes on the reverse of this side)

This becomes the handle

Fold and glue side tabs to create your basket

Fold this tab in half and use to stick the tail on the back so it 'pops' out a bit

Glue front paws to the bottom front of the basket



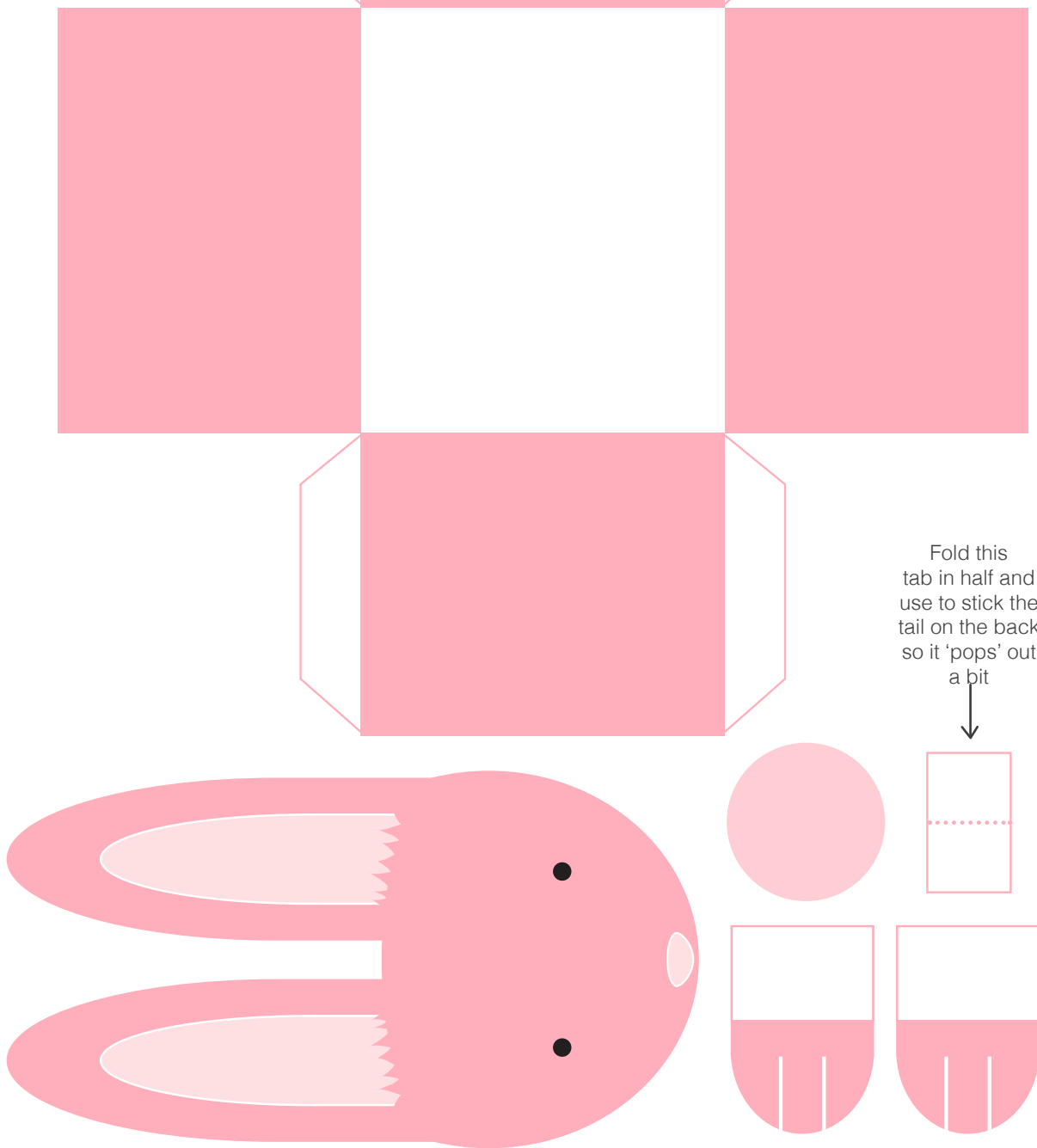
BUNNY BASKET

Fold along dotted line as well as along the edge of the basket

Fold this tab forward and glue head on the front (glue goes on the reverse of this side)

Fold and glue side tabs to create your basket

This becomes the handle



Fold this tab in half and use to stick the tail on the back so it 'pops' out a bit

Glue front paws to the bottom front of the basket

BUNNY BASKET

Fold along dotted line as well as along the edge of the basket

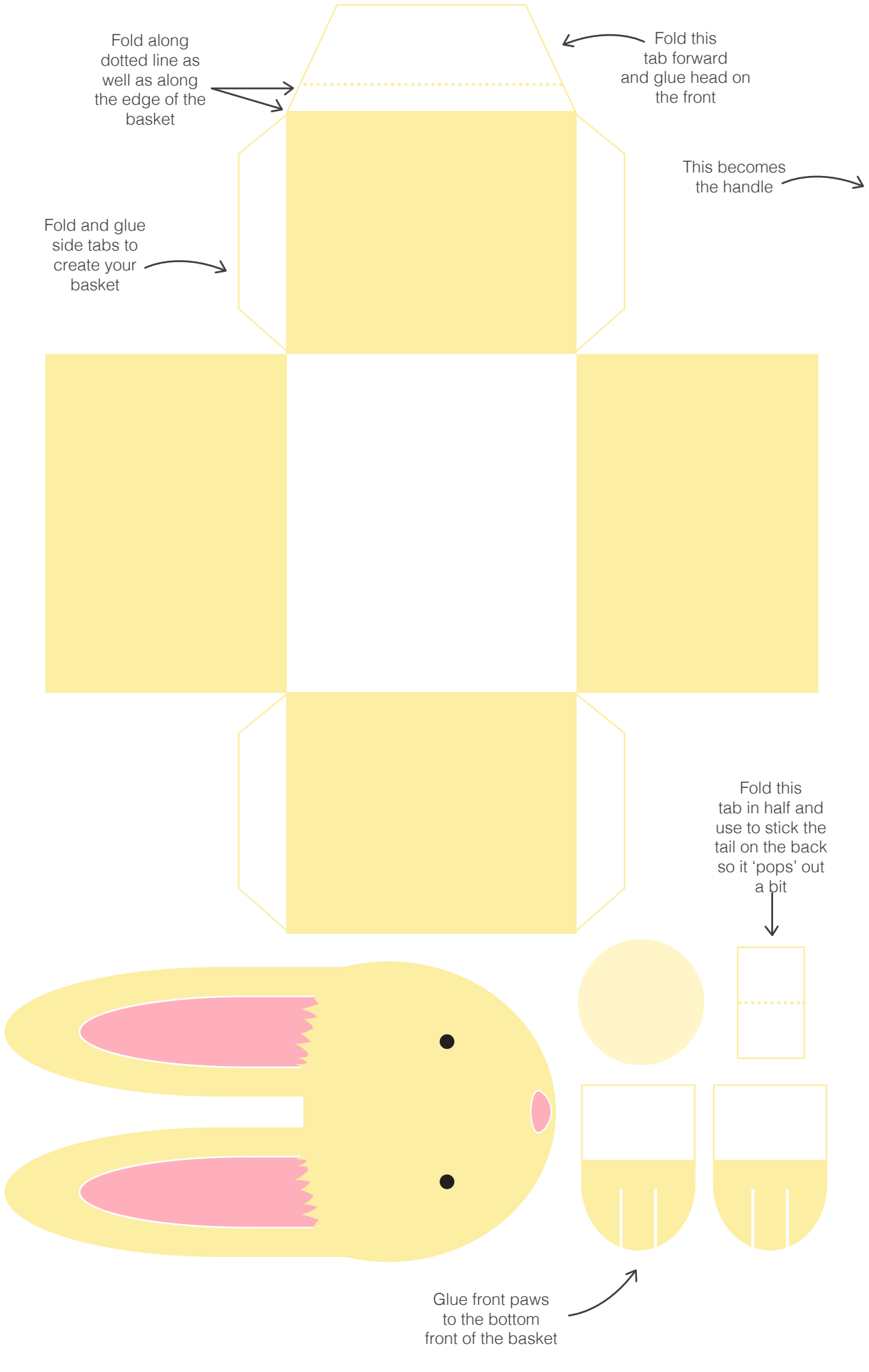
Fold this tab forward and glue head on the front

This becomes the handle

Fold and glue side tabs to create your basket

Fold this tab in half and use to stick the tail on the back so it 'pops' out a bit

Glue front paws to the bottom front of the basket



BUNNY BASKET

Fold along dotted line as well as along the edge of the basket

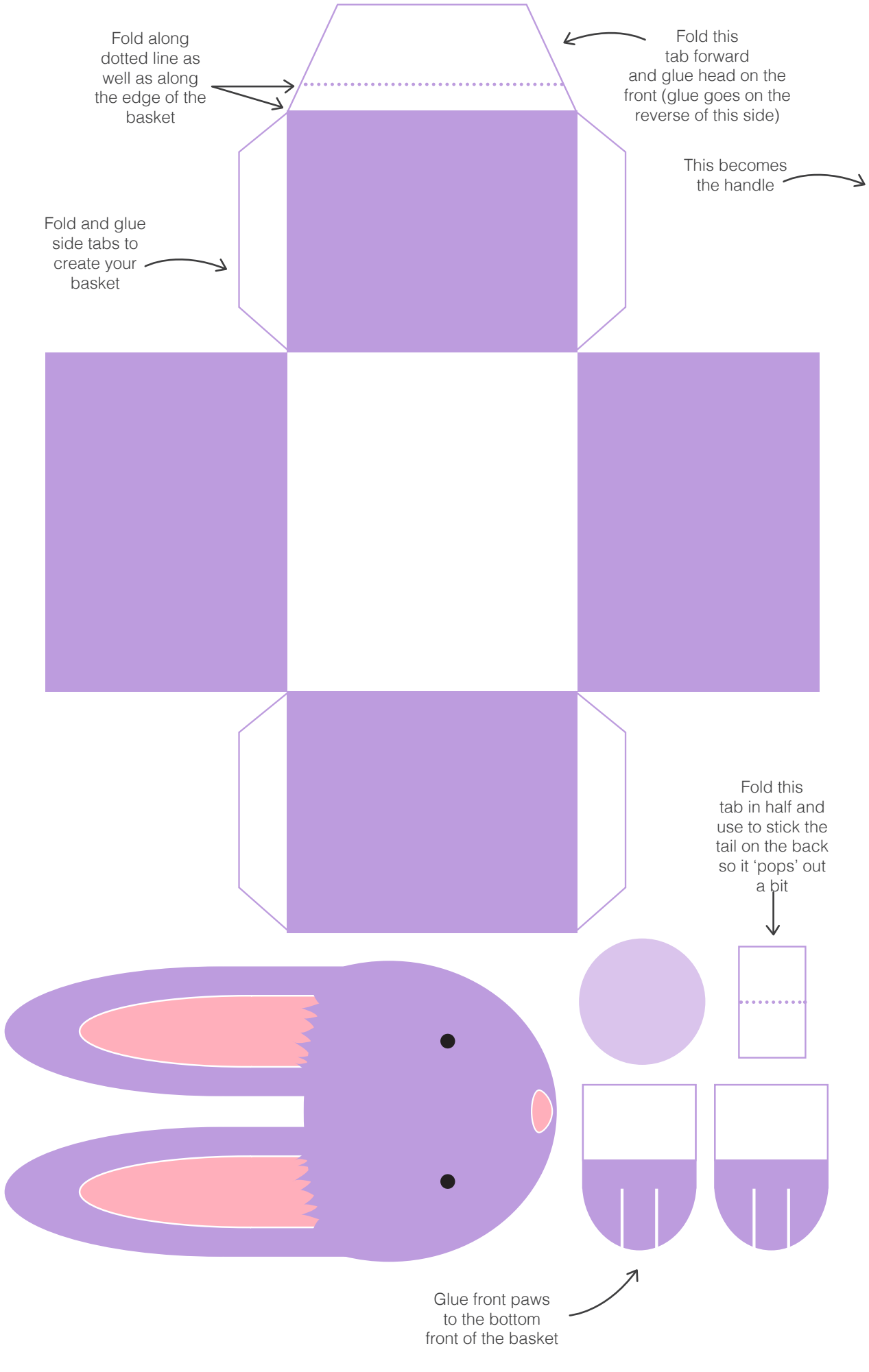
Fold this tab forward and glue head on the front (glue goes on the reverse of this side)

This becomes the handle

Fold and glue side tabs to create your basket

Fold this tab in half and use to stick the tail on the back so it 'pops' out a bit

Glue front paws to the bottom front of the basket



BUNNY BASKET

Fold along dotted line as well as along the edge of the basket

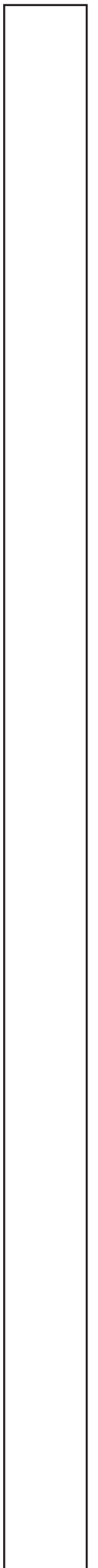
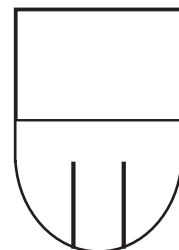
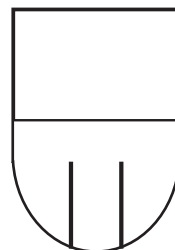
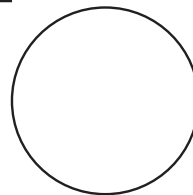
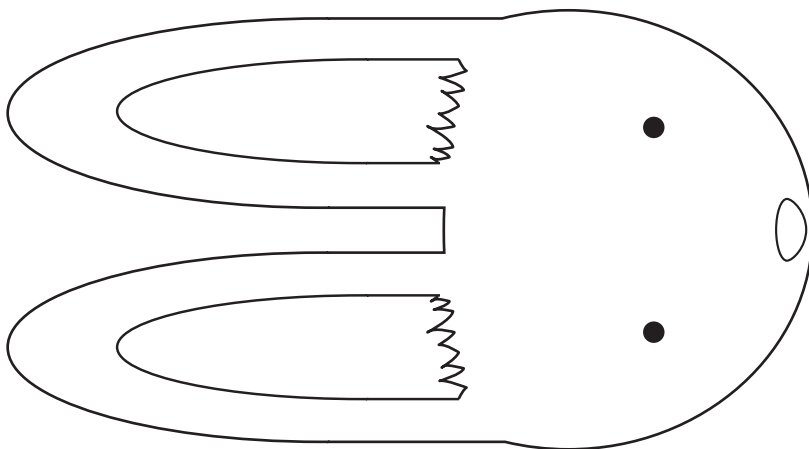
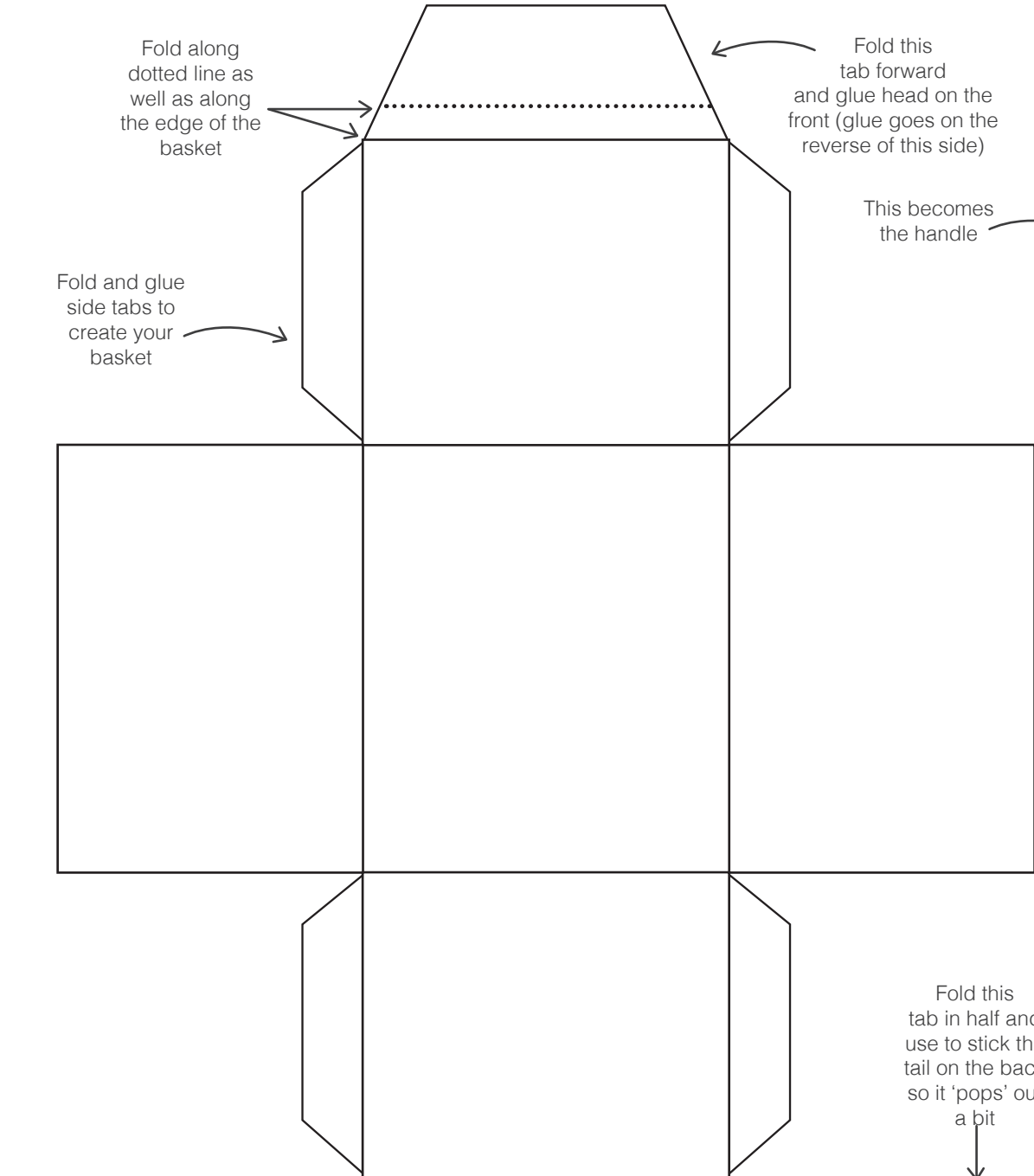
Fold this tab forward and glue head on the front (glue goes on the reverse of this side)

This becomes the handle

Fold and glue side tabs to create your basket

Fold this tab in half and use to stick the tail on the back so it 'pops' out a bit

Glue front paws to the bottom front of the basket



BUNNY BASKET